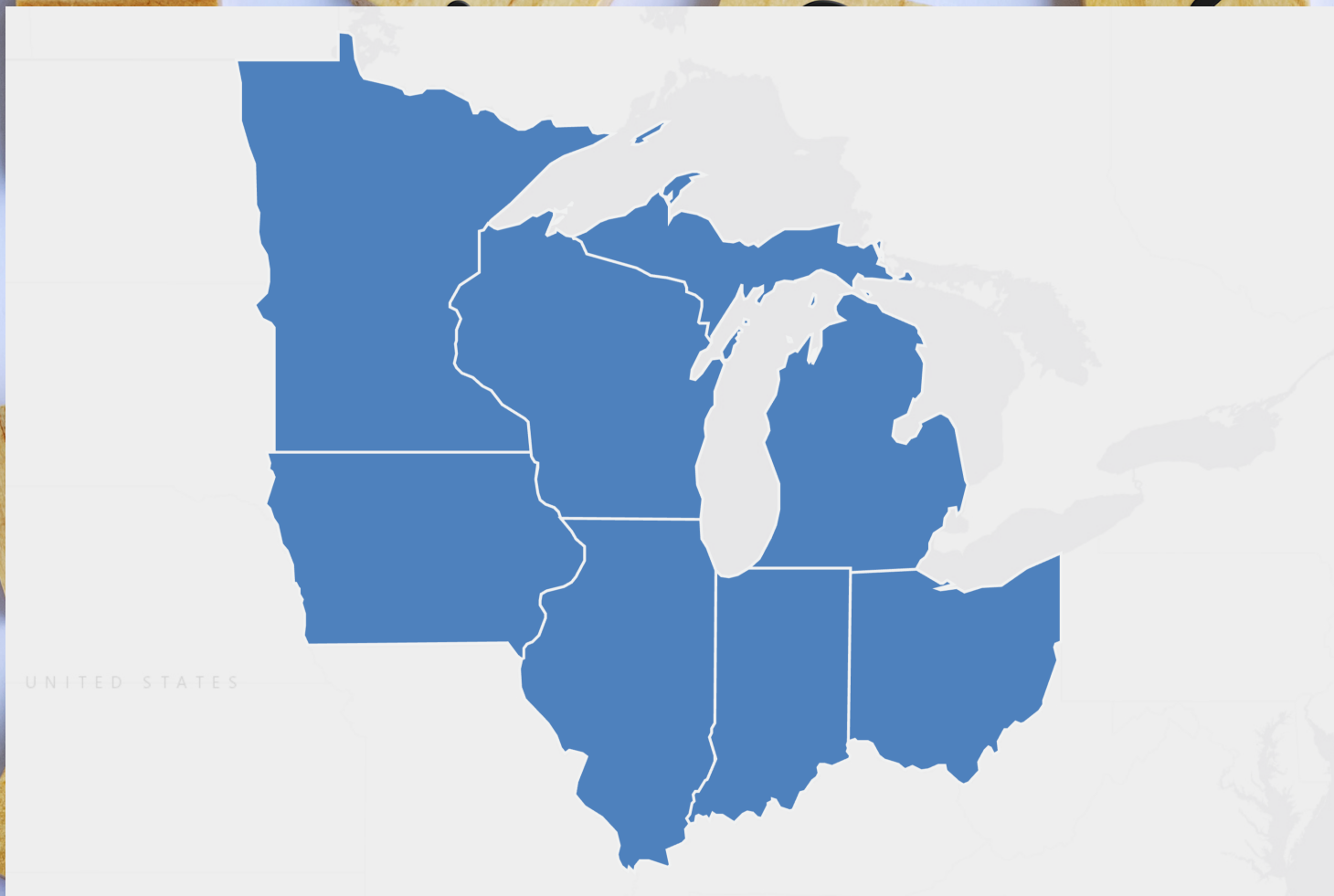


Region 6 Update



Presentation of the

Community Guide to Advance Health Information Equity





Linda Walton - IA
PI/Executive Director



Bobbi Newman - IA
Public libraries



Miles Dietz-Castel - IA
Communications



Darlene Kaskie - IA
Community & subawards

Your Region 6 Staff



Jacqueline Leskovec - IL
Membership & POP



Nora Barnett - OR
Public health



Erica Lake - MN
Academic & hospital libraries



Network of the
National Library of Medicine

Advance the progress of medicine and improve the public health by
providing all U.S. health professionals with
equal access to biomedical information
and improving the public's access to information to enable them to
make informed decisions about their health.



Bridging the Digital Divide

NNLM Initiatives



Environmental Determinants of Health

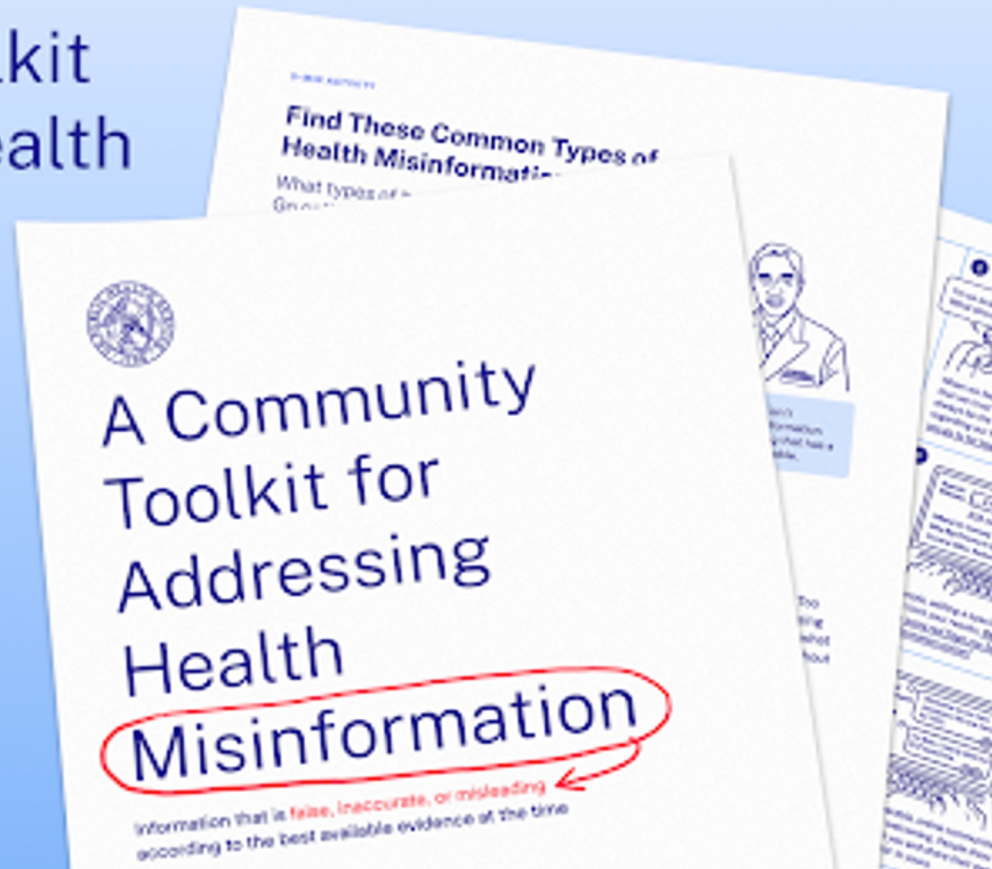


Confronting Health Misinformation

A Community Toolkit for Addressing Health Misinformation

Created by The Office of
The U.S. Surgeon General

With illustrations, a comic
strip, short activities, and
helpful tips!





Telehealth 101:

What Libraries Need to Know

June 12th- July 12th, 2023

Libraries across the United States are beginning to offer patrons access to telehealth services as a strategy for addressing inequities in digital access to healthcare. Explore library telehealth programs, why they are important, and how it enables greater access to quality healthcare.

Join us for this self-paced, 3 hour course.

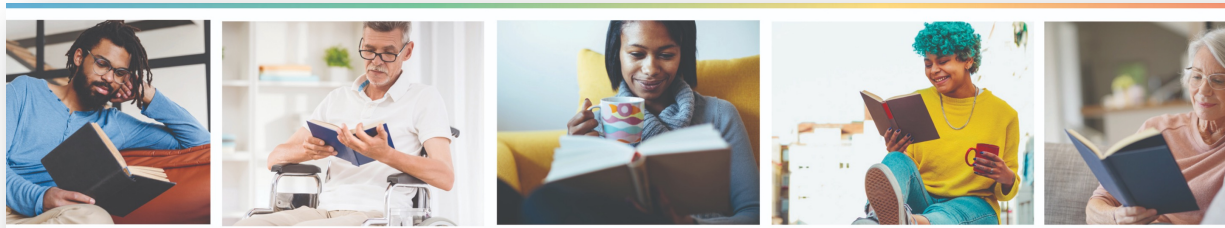
[Register on \[nnlm.gov/training\]\(https://nnlm.gov/training\)](https://nnlm.gov/training)



MLA

CHIS
LEVEL I

nnlm.gov/training



NNLM Reading Club

“Ready-to-Use”

More than 90 titles and 25 topics

Includes discussion guides!

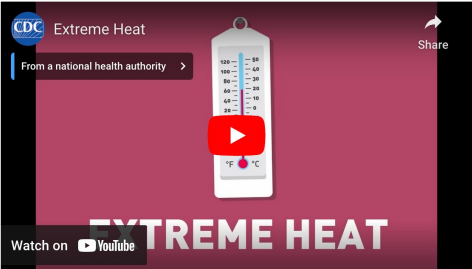
Home / Environmental Health


Environmental Health

Discover Environmental Health

Our environment affects our health. If parts of the environment, like the air, water, or soil become polluted, it can lead to health problems. For example, asthma pollutants and chemicals in the air or in the home can trigger asthma attacks. Some environmental risks are a part of the natural world, like radon in the soil. Others are the result of human activities, like lead poisoning from paint, or exposure to asbestos or mercury from mining or industrial use.

Environmental conditions such as contaminated water, unsafe food, and polluted air are as important as culture, community, and landscape in characterizing a place and determining the health outcomes of the people who live there. In some places, the state of the environment is a consequence of historical activities related to natural resources and cultural practices. In others, political decisions to achieve short-term economic objectives are made with little consideration of long-term public health consequences. [Source: Ailing in Place](#)



Watch on  YouTube

Discover MedlinePlus

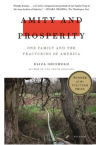
MedlinePlus is a service of the National Library of Medicine, the largest biomedical library in the world. Use [Medlineplus.gov](#) anywhere, anytime, on any device - for free - to discover high-quality health and wellness information that is reliable, easy to understand, and free of advertising, in both English and Spanish.

Discover information on:


- [Asbestos](#)
- [Lead and tap water](#)
- [Lead levels - blood](#)

FEATURED BOOKS


Title: Amity and Prosperity
Author: Eliza Griswold
Publisher: First Picador
Year published: 2019
[Visit page...](#)



Title: Plastic
Author: Susan Freinkel
Publisher: Houghton Mifflin Harcourt
Year published: 2011
[Visit page...](#)



Title: What the Eyes Don't See
Author: Mona Hanna-Attisha MD
Publisher: OneWorld
Year published: 2019
[Visit page...](#)



State Advisory Groups

- Interdisciplinary team
- Inform strategic plans



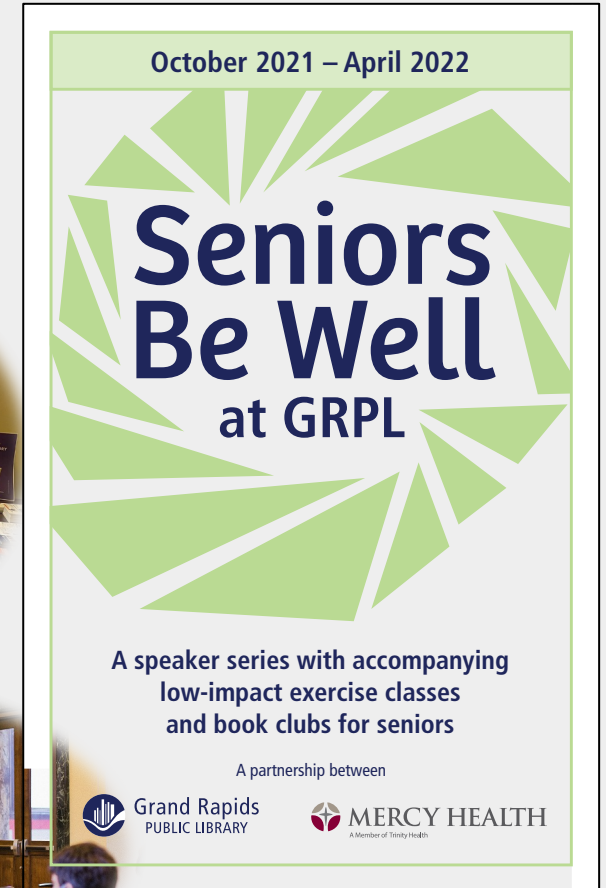
Partner Outreach Program

- Act as ambassadors for NNLM services and resources.
- Provide health information resources and training to underserved and underrepresented groups.



Community Approach

- Understand for local health information needs
- Identify for community-ready organizations
- Partner for local engagement and collaboration



Community Funding

Health & Safety
Infographics & Videos
in four languages



Khees Xaws Ncauj Tsev Me Nyuam

Cov poj niam feem ntau uas
muaj hnuv nyoog nyob rau ncu
21 txog 65 xyos yuav tsum tau
mus kuaj Pap Smear xwm yeem
nkaus txhawm rau los pab nrhiav
los sis tiv thaiv kab mob khees xaws
ncauj tsev me nyuam

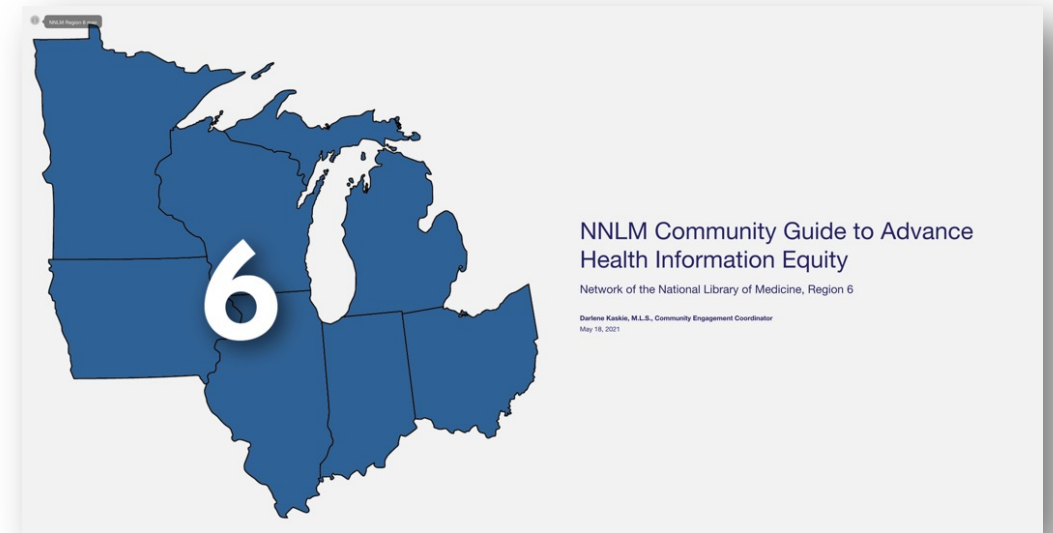
medlineplus.gov

This work was supported by the National Library of Medicine, National Institutes of Health under Cooperative Agreement number UG4LM013729 with the University of Iowa. The content is solely the responsibility of the authors and does not necessarily represent the official views of the National Institutes of Health.



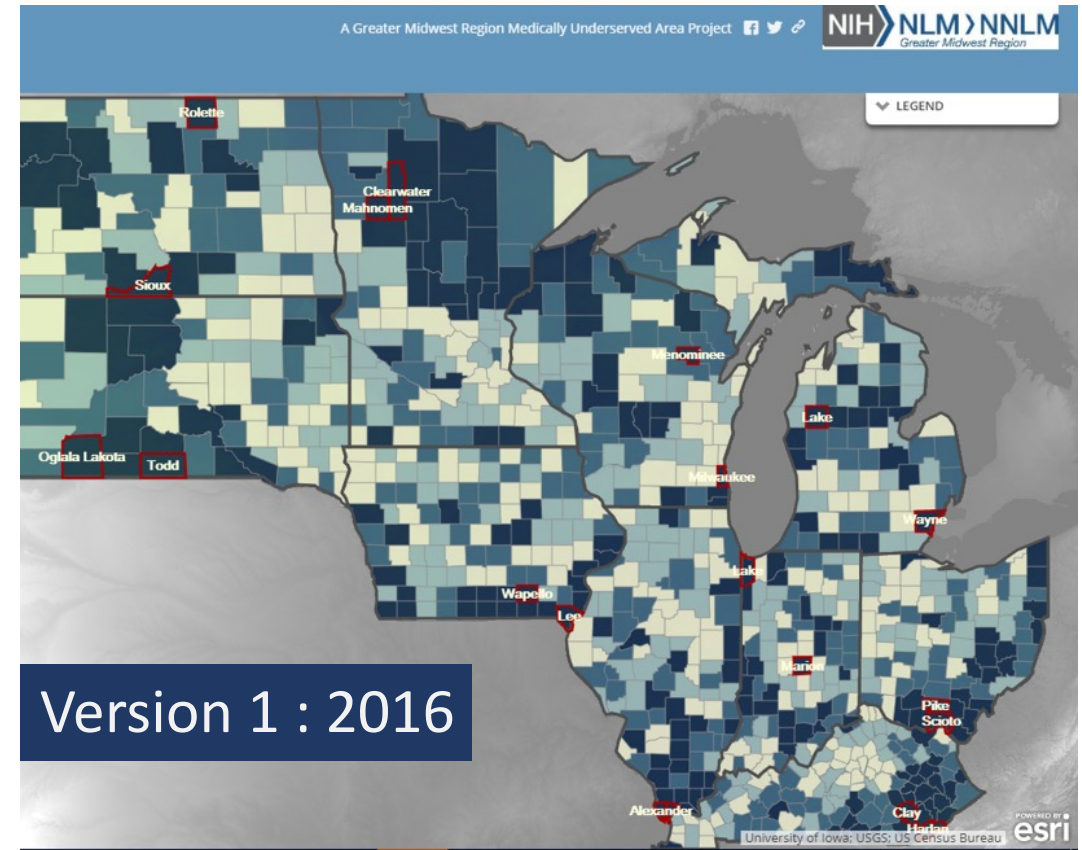
Discover

- **What** is the Community Guide to Advance Health Information Equity
- **Why** use the Community Guide to Advance Health Information Equity
- **How** to use the Community Guide to Advance Health Information Equity



Underserved Health Communities

A Greater Midwest Region Medically Underserved Areas Project



Expert Law Librarian



Aspiring Health Librarian



Social Determinants of Health



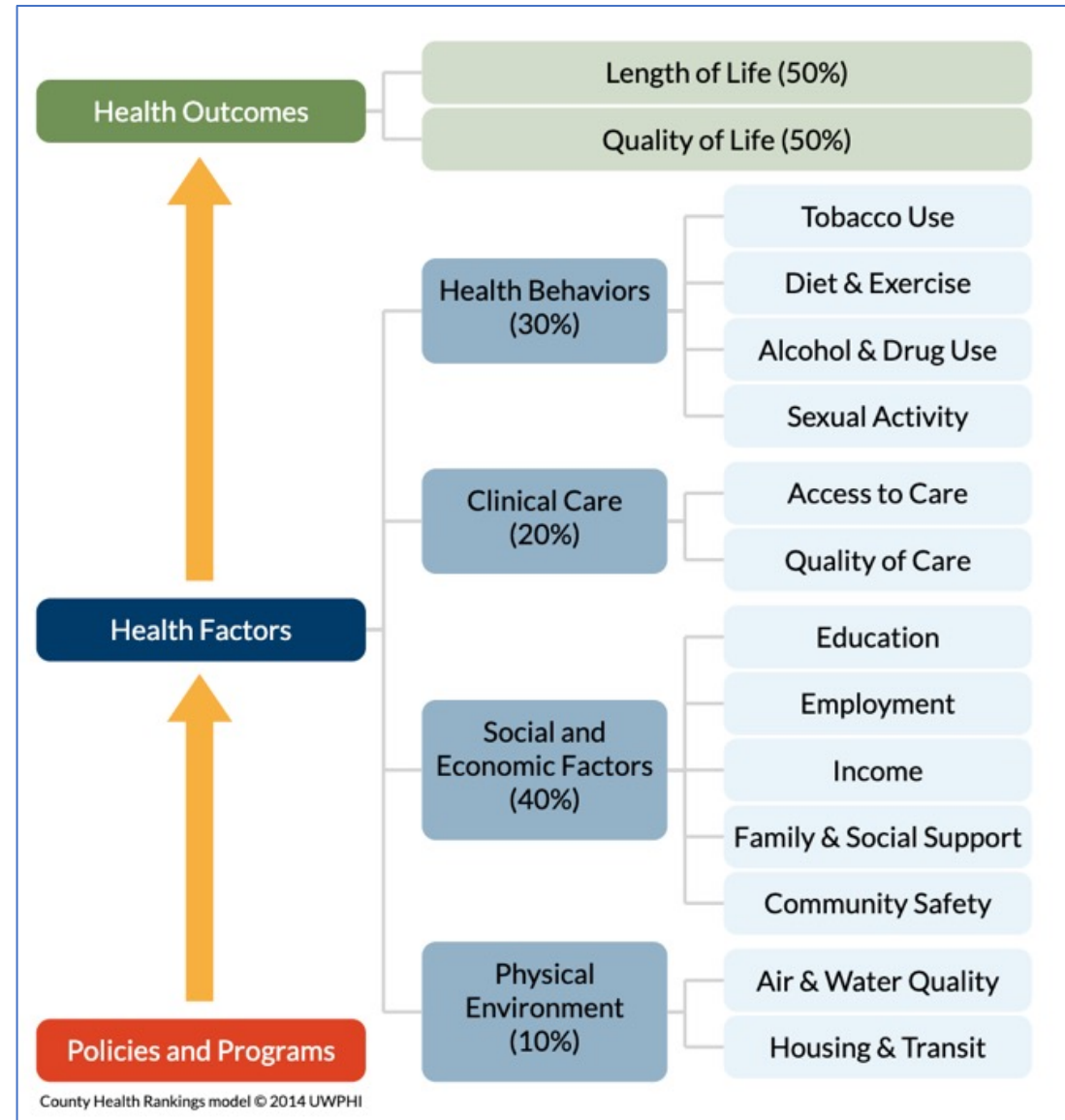
Healthy People 2030,
U.S. Department of
Health and Human
Services, Office of
Disease Prevention and
Health Promotion

<https://health.gov/healthypeople/objectives-and-data/social-determinants-health>

County Health Rankings Model

County Health Rankings & Roadmaps

Building a Culture of Health, County by County



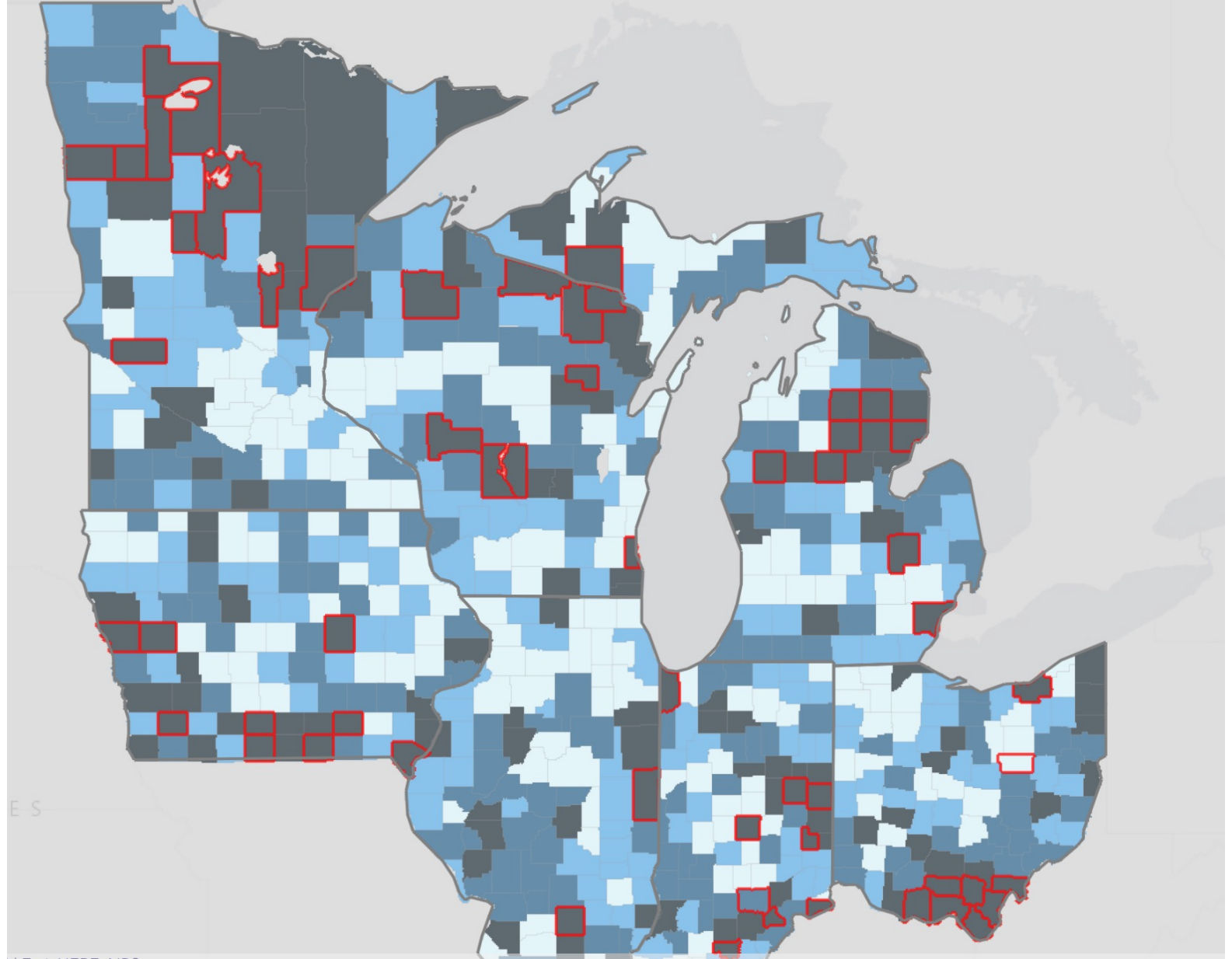


tell the
STORY

ArcGIS



Engaging with Communities Today



National Library of Medicine
Network of the National Library of Medicine

Region 6



Link to the Guide

nnlm.gov/about/regions/region6

NNLM Community Guide to Advance Health Information Equity

Network of the National Library of Medicine, Region 6

Darlene Kaskie, M.L.S., Community Engagement Coordinator
May 18, 2021

Benefits and Opportunities

Saves time

Educates users

Highlights communities

Guide & States

NNLM
Region 6

Collection

Community Guide to Advance Health Information Equity

Including select county stories for Indiana,
Illinois, Iowa, Michigan, Minnesota, Ohio,
and Wisconsin

Network of the National Library of Medicine, Region 6

Get started



1 The Guide



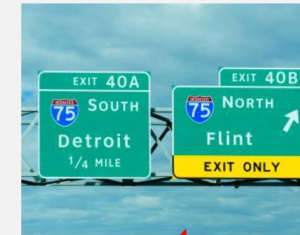
2 Illinois



3 Indiana



4 Iowa



5 Michigan



6 Minnesota



7 Ohio



8 Wisconsin



County Stories



Collection

Michigan County Stories

NNLM Community Guide to Advance Health Information Equity

Network of the National Library of Medicine, Region 6

[Get started](#)



1 Clare County, Michigan



2 Crawford County, Michigan



3 Genesee County, Michigan



4 Iosco County, Michigan



5 Iron County, Michigan



6 Lake County, Michigan



7 Oscoda County, Michigan



8 Roscommon County, Michigan



9 Wayne County and Detroit, Michigan

Connect with Us Online



facebook.com/nnlmregion6



twitter.com/nnlmregion6



news.nlm.gov/region_6

Region 6 Newsletters

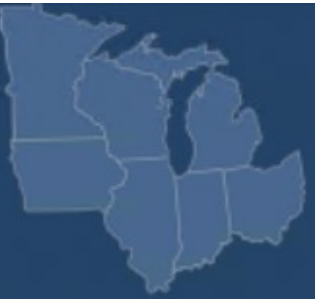
Weekly newsletter

Monthly newsletters for:

- Public Librarians
- Health Professionals
- Hospital & Academic Health Science Librarians

<https://nnlm.gov/R6news>

REGION 6 WEEKLY DIGEST



NIH National Library of Medicine
Network of the National Library of Medicine

January 21, 2022

How PubMed Works in April 2022

Please join NNLM for the upcoming, 4-part series in April 2022 called **How PubMed Works**. How PubMed works is divided into 4 unique sessions. You can sign up for one, some or all. [Learn more and register for each session.](#)

Upcoming Webinars and Events

January 27, 1:00 - 2:00pm
[Narratives of Pandemics Past: Archival Approaches to Understanding the COVID-19 Pandemic](#)


January 27, 5:00pm
[All of Us Research Program Presents: FAUCI Film Screening and Conversation](#)

January 28, 11:00am
[NLM Office Hours: PUBMED](#)

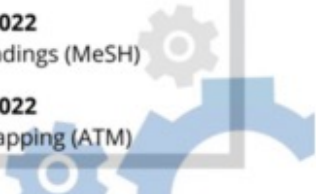
February 9, 1:00 - 2:00pm
[Yoga, Social Justice, Redefining Body Image & Personal Power: An Introduction](#)

February 10, 1:00 - 2:00 pm
[What History Can Teach Us About the Future of Medicine](#)

How PubMed Works April Series



April 6, 2022
How PubMed Works: Introduction
April 8, 2022
How PubMed Works: Selection
April 13, 2022
Medical Subject Headings (MeSH)
April 15, 2022
Automatic Term Mapping (ATM)



Thank you!



Region6-RML@uiowa.edu

darlene-kaskie@uiowa.edu

This project has been funded in whole or in part with Federal funds from the Department of Health and Human Services, National Institutes of Health, National Library of Medicine, under Grant Number UG4 LM013729 with the University of Iowa.